



California Fragrance Company, Inc.

Address: [Redacted]

Contact Name:

Contact Phone:

License #: OCM-PROC-000009

Sample ID: 2412SMNY0432.1870



Phyto-Farma Labs

a Smithers company

CERTIFICATE OF ANALYSIS

Permit #: OCM-CPL-00004

Certificate: 7763.1

Wyld - Elderberry Gummies - 10mg THC: 5mg CBN - 10pk

Lot #: NY EB B10

Sample ID: 2412SMNY0432.1870

Regulatory Category: Adult Use

Received: 12/16/2024

Sampling Location: [Redacted]

Lot Size: 471

Sample Type: Edible

Amount Received: 2

Sample Collected: 12/16/2024 10:52 AM

Published: 12/19/2024



R&D NOT FOR RETAIL

| | | | |
|------------------------------------|---------------------------------------|--|--------------------------------------|
| Cannabinoid Profile Pass | Terpenes Total Tested | Residual Solvents Pass | Pass Sample Status |
| Pesticides Pass | Mycotoxins Pass | Water Activity Pass | |
| Trace Metals Pass | Microbial Contaminants Pass | Moisture Analysis Not Tested | 0.000863% Total CBD |
| | Filth & Foreign Not Tested | | 0.407 % Total Cannabinoids |

Report Notes: N/A

Alicia Caruso-Thomas

12/19/2024

Alicia Caruso-Thomas

Laboratory Director

Phyto-Farma Labs

49 John Hicks Drive
Warwick, NY 10990
(845) 202-9737



PJLA
Testing
Accreditation #: 121747

This is a Phyto-Farma certification that relates only to the material tested and shall not be reproduced, unless in its entirety, without written approval from Phyto-Farma. Test results are confidential, unless explicitly waived. All Pass/Fail results please reference state regulations released on 01FEB2024. Pass/Fail results do not use uncertainty, but is available upon request. The product represented has been tested by Phyto-Farma Labs using validated scientific methodologies. Note action levels are state determined thresholds for human safety and consumption. Acronym Definitions: ND - Not Detected, LOQ - Limit of Quantification, ULOQ - Upper Limit of Quantification; are terms used to describe the reliably measured smallest and largest concentrations. <LOQ> denotes the result is above detection limit, but below quantifiable limit. CFU - Colony Forming Units. Cannabis Product Sampling SOP# SOP.T.20.010.



California Fragrance Company, Inc.

Address: [REDACTED]

Contact Name:

Contact Phone:

License #: OCM-PROC-000009

Sample ID: 2412SMNY0432.1870



Phyto-Farma Labs

a Smithers company

CERTIFICATE OF ANALYSIS

Permit #: OCM-CPL-00004

Certificate: 7763.1

Average Cannabinoid Profile

Pass

Sample Analysis

Date: 12/19/2024 05:29 PM

SOP: NY.SOPT.40.260

Analyzed By: HPLC

Sample Weight: N/A

Analyst: Stephanie Knapp

| Analyte | LOQ (%) | Average % (w/w) | mg/serving | Homogeneity† |
|--|----------------|-----------------|--------------|--------------|
| Total Tetrahydrocannabinol (THC) | - | 0.263 | 10.5 | |
| Tetrahydrocannabinolic acid (THCA) | 0.500 | <LOQ | <LOQ | |
| Δ8-THC | 0.500 | <LOQ | <LOQ | |
| Δ9-THC | 0.500 | 0.263 | 10.5 | |
| Δ10-THC-RS | 0.500 | <LOQ | <LOQ | |
| Δ10-THC-RR | 0.500 | <LOQ | <LOQ | |
| Total Cannabidiol (CBD) | - | 0.000863 | 0.0345 | |
| Cannabinadiolic acid (CBDA) | 0.500 | 0.000517 | 0.0207 | |
| Cannabidiol (CBD) | 0.500 | 0.000410 | 0.0164 | |
| Total Active Tetrahydrocannabivarin (THCV) | - | 0.00141 | 0.0563 | |
| Tetrahydrocannabivarinic acid (THCVA)* | 0.500 | <LOQ | <LOQ | |
| Tetrahydrocannabivarin (THCV) | 0.500 | 0.00141 | 0.0563 | |
| Total Active Cannabigerol (CBG) | - | 0.00603 | 0.241 | |
| Cannabigerolic acid (CBGA) | 0.500 | <LOQ | <LOQ | |
| Cannabigerol (CBG) | 0.500 | 0.00603 | 0.241 | |
| Cannabidivarin (CBDV) | 0.500 | <LOQ | <LOQ | |
| Cannabinol (CBN) | 0.500 | 0.133 | 5.31 | |
| Cannabichromene (CBC) | 0.500 | 0.00295 | 0.118 | |
| Cannabinoid Totals | Actual % (w/w) | mg/serving | Homogeneity† | |
| Total Cannabinoids | 0.407 | 16.3 | | |

* Analyte is not included in ISO 17025 scope of accreditation

† Concentration of individual samples must be ±25% of the mean concentration

Total Active CBD = CBD + (0.877 x CBDA); Total Active CBG = CBG + (0.878 x CBGA);

Total Active THC = (Δ9THC + Δ8THC + Δ10THC-RS + Δ10THC-RR) + (0.877 x THCA);

Total Active THCV = THCV + (0.867 x THCVA);

Serving Weight: 4g

Alicia Caruso-Thomas

12/19/2024

Alicia Caruso-Thomas

Laboratory Director

Phyto-Farma Labs

49 John Hicks Drive

Warwick, NY 10990

(845) 202-9737



PJLA Testing Accreditation #: 121747

This is a Phyto-Farma certification that relates only to the material tested and shall not be reproduced, unless in its entirety, without written approval from Phyto-Farma. Test results are confidential, unless explicitly waived. All Pass/Fail results please reference state regulations released on 01FEB2024. Pass/Fail results do not use uncertainty, but is available upon request. The product represented has been tested by Phyto-Farma Labs using validated scientific methodologies. Note action levels are state determined thresholds for human safety and consumption. Acronym Definitions: ND - Not Detected, LOQ - Limit of Quantification, ULOQ - Upper Limit of Quantification; are terms used to describe the reliably measured smallest and largest concentrations. <LOQ* denotes the result is above detection limit, but below quantifiable limit. CFU - Colony Forming Units. Cannabis Product Sampling SOP# SOP.T.20.010.



California Fragrance Company, Inc.
 Address: [REDACTED]
 Contact Name:
 Contact Phone:
 License #: OCM-PROC-000009
 Sample ID: 2412SMNY0432.1870

CERTIFICATE OF ANALYSIS
 Permit #: OCM-CPL-00004

Certificate: 7763.1

Terpene Total

Tested (0.02230%)

Sample Analysis

Date: 12/18/2024 01:36 PM

SOP: NY.SOPT.40.090

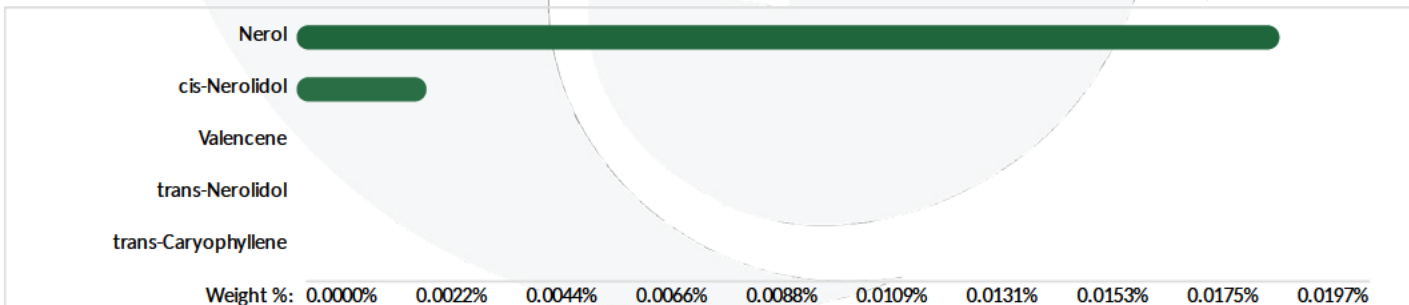
Sample Weight: 0.4631 g

Analyzed By: GC-MS

Analyst: Destiny Ribadeneira

| Analyte | LOQ (%) | Results (%) | Analyte | LOQ (%) | Results (%) |
|---------------------|-----------|-------------|---------------------|-----------|-------------|
| 3-Carene | 0.0004200 | <LOQ | gamma-Terpinene | 0.0004400 | <LOQ |
| alpha-Bisabolol | 0.0005000 | <LOQ | gamma-Terpineol | 0.0003000 | <LOQ |
| alpha-Humulene | 0.0005600 | <LOQ | Geraniol | 0.0004800 | <LOQ |
| alpha-Phellandrene | 0.0006600 | <LOQ | Geranyl acetate | 0.0006200 | <LOQ |
| alpha-Pinene | 0.0004800 | <LOQ | Guaiol | 0.0006000 | <LOQ |
| alpha-Terpinene | 0.0002600 | <LOQ | Isoborneol | 0.0003400 | <LOQ |
| alpha-Terpineol | 0.0003400 | <LOQ | Isopulegol | 0.0006600 | <LOQ |
| beta-Myrcene | 0.0006400 | <LOQ | Limonene | 0.0007400 | <LOQ |
| beta-Pinene | 0.0006600 | <LOQ | Linalool | 0.0004600 | <LOQ |
| Borneol | 0.0004600 | <LOQ | Menthol | 0.0004600 | <LOQ |
| Camphene | 0.0004400 | <LOQ | Nerol | 0.0005000 | 0.01970 |
| Camphor | 0.0004000 | <LOQ | Pulegone (+) | 0.0005600 | <LOQ |
| Caryophyllene oxide | 0.0005800 | <LOQ | Sabinene | 0.0003400 | <LOQ |
| Cedrene | 0.0004400 | <LOQ | Sabinene Hydrate | 0.0004200 | <LOQ |
| Cedrol | 0.0005600 | <LOQ | Terpinolene | 0.0005000 | <LOQ |
| cis-Nerolidol | 0.0006800 | 0.002600 | trans-b-Ocimene | 0.0004200 | <LOQ |
| cis-Ocimene | 0.0005200 | <LOQ | trans-Caryophyllene | 0.0006600 | <LOQ |
| Eucalyptol | 0.0007200 | <LOQ | trans-Nerolidol | 0.0007200 | <LOQ |
| Farnesene | 0.0008400 | <LOQ | Valencene | 0.0005600 | <LOQ |
| Fenchone | 0.0005000 | <LOQ | | | |

| Terpene Totals | % | Pass/Fail |
|----------------|---------|-----------|
| Total Terpenes | 0.02230 | N/A |



Alicia Caruso-Thomas
 Laboratory Director

12/19/2024
Alicia Caruso-Thomas

Phyto-Farma Labs
 49 John Hicks Drive
 Warwick, NY 10990
 (845) 202-9737



This is a Phyto-Farma certification that relates only to the material tested and shall not be reproduced, unless in its entirety, without written approval from Phyto-Farma. Test results are confidential, unless explicitly waived. All Pass/Fail results please reference state regulations released on 01FEB2024. Pass/Fail results do not use uncertainty, but is available upon request. The product represented has been tested by Phyto-Farma Labs using validated scientific methodologies. Note action levels are state determined thresholds for human safety and consumption. Acronym Definitions: ND - Not Detected, LOQ - Limit of Quantification, ULOQ - Upper Limit of Quantification; are terms used to describe the reliably measured smallest and largest concentrations. <LOQ> denotes the result is above detection limit, but below quantifiable limit. CFU - Colony Forming Units. Cannabis Product Sampling SOP# SOP.20.010.



California Fragrance Company, Inc.

Address: [REDACTED]

Contact Name:

Contact Phone:

License #: OCM-PROC-000009

Sample ID: 2412SMNY0432.1870



Phyto-Farma Labs

a Smithers company

CERTIFICATE OF ANALYSIS

Permit #: OCM-CPL-00004

Certificate: 7763.1

Trace Metals

Pass

Sample Analysis

Date: 12/19/2024 05:10 PM

SOP: NY.SOPT.40.050

Analyzed By: ICP-MS

Sample Weight: 0.1314 g

Analyst: Moni Kaneti

| Analyte | LOQ (µg/g) | Action Limit (µg/g) | Results (µg/g) | Pass/Fail |
|----------------|------------|---------------------|----------------|-----------|
| Antimony (Sb)* | 0.315 | 120 | <LOQ | PASS |
| Arsenic (As)* | 0.180 | 1.50 | <LOQ | PASS |
| Cadmium (Cd)* | 0.159 | 0.500 | <LOQ | PASS |
| Chromium (Cr)* | 0.891 | 1100 | <LOQ | PASS |
| Copper (Cu)* | 0.984 | 300 | <LOQ | PASS |
| Lead (Pb)* | 0.195 | 0.500 | <LOQ | PASS |
| Mercury (Hg)* | 0.0330 | 3.00 | <LOQ | PASS |
| Nickel (Ni)* | 0.273 | 20.0 | <LOQ | PASS |

* Analyte is not included in ISO 17025 scope of accreditation

Mycotoxin Analysis

Pass

Sample Analysis

Date: 12/19/2024 07:06 PM

SOP: NY.SOPT.40.180

Analyzed By: LC-MS/MS

Sample Weight: 0.1 g

Analyst: Destiny Ribadeneyra

| Analyte | LOQ (µg/g) | Action Limit (µg/g) | Results (µg/g) | Pass/Fail |
|-------------------|------------|---------------------|----------------|-----------|
| Sum of Aflatoxins | - | 0.020 | 0 | PASS |
| Aflatoxin B1 | 0.0010 | 0.020 | <LOQ | PASS |
| Aflatoxin B2 | 0.0020 | 0.020 | <LOQ | PASS |
| Aflatoxin G1 | 0.0010 | 0.020 | <LOQ | PASS |
| Aflatoxin G2 | 0.0020 | 0.020 | <LOQ | PASS |
| Ochratoxin A | 0.0020 | 0.020 | <LOQ | PASS |

Alicia Caruso-Thomas

12/19/2024

Alicia Caruso-Thomas

Laboratory Director

Phyto-Farma Labs

49 John Hicks Drive

Warwick, NY 10990

(845) 202-9737



PJLA Testing Accreditation #: 121747

This is a Phyto-Farma certification that relates only to the material tested and shall not be reproduced, unless in its entirety, without written approval from Phyto-Farma. Test results are confidential, unless explicitly waived. All Pass/Fail results please reference state regulations released on 01FEB2024. Pass/Fail results do not use uncertainty, but is available upon request. The product represented has been tested by Phyto-Farma Labs using validated scientific methodologies. Note action levels are state determined thresholds for human safety and consumption. Acronym Definitions: ND - Not Detected, LOQ - Limit of Quantification, ULOQ - Upper Limit of Quantification; are terms used to describe the reliably measured smallest and largest concentrations. <LOQ* denotes the result is above detection limit, but below quantifiable limit. CFU - Colony Forming Units. Cannabis Product Sampling SOP# SOP.T.20.010.



California Fragrance Company, Inc.

Address: [Redacted]

Contact Name:

Contact Phone:

License #: OCM-PROC-000009

Sample ID: 2412SMNY0432.1870



Phyto-Farma Labs

a Smithers company

CERTIFICATE OF ANALYSIS

Permit #: OCM-CPL-00004

Certificate: 7763.1

Pesticides LC

Pass

Sample Analysis

Date: 12/19/2024 05:04 PM

SOP: NY.SOPT.040.270

Analyzed By: LC-MS/MS

Sample Weight: 1 g

Analyst: Destiny Ribadeneyra

Table with 10 columns: Analyte, LOQ (ppm), Action Limit (ppm), Results (ppm), Pass/Fail. Contains two columns of pesticide data.

* Analyte is not included in ISO 17025 scope of accreditation

Alicia Caruso-Thomas

12/19/2024

Alicia Caruso-Thomas

Laboratory Director

Phyto-Farma Labs

49 John Hicks Drive
Warwick, NY 10990
(845) 202-9737



PJLA Testing
Accreditation #: 121747

This is a Phyto-Farma certification that relates only to the material tested and shall not be reproduced, unless in its entirety, without written approval from Phyto-Farma. Test results are confidential, unless explicitly waived. All Pass/Fail results please reference state regulations released on 01FEB2024. Pass/Fail results do not use uncertainty, but is available upon request. The product represented has been tested by Phyto-Farma Labs using validated scientific methodologies. Note action levels are state determined thresholds for human safety and consumption. Acronym Definitions: ND - Not Detected, LOQ - Limit of Quantification, ULOQ - Upper Limit of Quantification; are terms used to describe the reliably measured smallest and largest concentrations. <LOQ* denotes the result is above detection limit, but below quantifiable limit. CFU - Colony Forming Units. Cannabis Product Sampling SOP# SOP.T.20.010.



California Fragrance Company, Inc.
 Address: [REDACTED]
 Contact Name:
 Contact Phone:
 License #: OCM-PROC-000009
 Sample ID: 2412SMNY0432.1870

Certificate: 7763.1

Pesticides GC

Pass

Sample Analysis

Date: 12/19/2024 05:34 PM **SOP:** NYS.SOPT.040.271
Analyzed By: GC-MS/MS **Sample Weight:** N/A
Analyst: Destiny Ribadeneyra

| Analyte | LOQ (ppm) | Action Limit (ppm) | Results (ppm) | Pass/Fail |
|--------------------------|-----------|--------------------|---------------|-----------|
| Captan* | 0.300 | 1.00 | <LOQ | PASS |
| Chlordane* | 0.0700 | 1.00 | <LOQ | PASS |
| Chlorfenapyr* | 0.100 | 1.00 | <LOQ | PASS |
| Coumaphos* | 0.190 | 1.00 | <LOQ | PASS |
| Cyfluthrin* | 0.110 | 1.00 | <LOQ | PASS |
| Cypermethrin* | 0.240 | 1.00 | <LOQ | PASS |
| Fipronil* | 0.170 | 0.400 | <LOQ | PASS |
| Imazalil* | 0.170 | 0.200 | <LOQ | PASS |
| Methyl parathion* | 0.0900 | 0.200 | <LOQ | PASS |
| Pentachloronitrobenzene* | 0.170 | 1.00 | <LOQ | PASS |
| Trifloxystrobin* | 0.110 | 0.200 | <LOQ | PASS |

* Analyte is not included in ISO 17025 scope of accreditation

Alicia Caruso-Thomas
 Laboratory Director

12/19/2024
Alicia Caruso-Thomas

Phyto-Farma Labs
 49 John Hicks Drive
 Warwick, NY 10990
 (845) 202-9737



This is a Phyto-Farma certification that relates only to the material tested and shall not be reproduced, unless in its entirety, without written approval from Phyto-Farma. Test results are confidential, unless explicitly waived. All Pass/Fail results please reference state regulations released on 01FEB2024. Pass/Fail results do not use uncertainty, but is available upon request. The product represented has been tested by Phyto-Farma Labs using validated scientific methodologies. Note action levels are state determined thresholds for human safety and consumption. Acronym Definitions: ND - Not Detected, LOQ - Limit of Quantification, ULOQ - Upper Limit of Quantification; are terms used to describe the reliably measured smallest and largest concentrations. <LOQ* denotes the result is above detection limit, but below quantifiable limit. CFU - Colony Forming Units. Cannabis Product Sampling SOP# SOP.T.20.010.



California Fragrance Company, Inc.

Address: [Redacted]

Contact Name:

Contact Phone:

License #: OCM-PROC-000009

Sample ID: 2412SMNY0432.1870



Phyto-Farma Labs

a Smithers company

CERTIFICATE OF ANALYSIS

Permit #: OCM-CPL-00004

Certificate: 7763.1

Residual Solvents

Pass

Sample Analysis

Date: 12/19/2024 04:54 PM

SOP: NYS.SOPT.040.272

Analyzed By: GC-MS

Sample Weight: 0.1043 g

Analyst: Stephanie Knapp

| Analyte | LOQ (ppm) | Action Limit (ppm) | Results (ppm) | Pass/Fail |
|---|-----------|--------------------|---------------|-----------|
| 1,2-Dichloroethane (Ethylene dichloride, Ethylene chloride) | 0.100 | 5.00 | <LOQ | PASS |
| 2-Propanol (Isopropanol, Isopropyl alcohol) | 125 | 5000 | <LOQ | PASS |
| Acetone (2-Propanone) | 125 | 5000 | <LOQ | PASS |
| Acetonitrile | 23.6 | 410 | <LOQ | PASS |
| Benzene | 0.100 | 2.00 | <LOQ | PASS |
| Butanes, Total | 62.5 | 5000 | <LOQ | PASS |
| Chloroform | 1.50 | 60.0 | <LOQ | PASS |
| Dichloromethane (Methylene chloride) | 15.0 | 600 | <LOQ | PASS |
| Dimethyl sulfoxide (DMSO) | 125 | 5000 | <LOQ | PASS |
| Ethanol (Ethyl alcohol) | 125 | 5000 | <LOQ | PASS |
| Ethyl acetate (Acetic acid ethyl ester) | 125 | 5000 | <LOQ | PASS |
| Ethyl ether (Diethyl ether, 1,1'-Oxybisethane) | 125 | 5000 | <LOQ | PASS |
| Heptane (n-Heptane) | 125 | 5000 | <LOQ | PASS |
| Hexanes, Total | 14.5 | 290 | <LOQ | PASS |
| Methanol (Methyl alcohol) | 75.1 | 3000 | <LOQ | PASS |
| Pentanes, Total | 195 | 5000 | <LOQ | PASS |
| Propane | 63.0 | 5000 | <LOQ | PASS |
| Toluene (Methylbenzene) | 22.3 | 890 | <LOQ | PASS |
| Trichloroethane (1,1,1-) | 37.6 | 1500 | <LOQ | PASS |
| Tetrafluoroethane (1,1,1,2-) (HFC134a)* | 10.0 | 1000 | <LOQ | PASS |
| Xylenes, Total (ortho-, meta-, para-) | 109 | 2170 | <LOQ | PASS |

* Analyte is not included in ISO 17025 scope of accreditation

Alicia Caruso-Thomas

12/19/2024

Alicia Caruso-Thomas

Laboratory Director

Phyto-Farma Labs

49 John Hicks Drive
Warwick, NY 10990
(845) 202-9737



PJLA Testing
Accreditation #: 121747

This is a Phyto-Farma certification that relates only to the material tested and shall not be reproduced, unless in its entirety, without written approval from Phyto-Farma. Test results are confidential, unless explicitly waived. All Pass/Fail results please reference state regulations released on 01FEB2024. Pass/Fail results do not use uncertainty, but is available upon request. The product represented has been tested by Phyto-Farma Labs using validated scientific methodologies. Note action levels are state determined thresholds for human safety and consumption. Acronym Definitions: ND - Not Detected, LOQ - Limit of Quantification, ULOQ - Upper Limit of Quantification; are terms used to describe the reliably measured smallest and largest concentrations. <LOQ* denotes the result is above detection limit, but below quantifiable limit. CFU - Colony Forming Units. Cannabis Product Sampling SOP# SOP.T.20.010.



California Fragrance Company, Inc.

Address: [Redacted]

Contact Name:

Contact Phone:

License #: OCM-PROC-000009

Sample ID: 2412SMNY0432.1870



Phyto-Farma Labs

a Smithers company

CERTIFICATE OF ANALYSIS

Permit #: OCM-CPL-00004

Certificate: 7763.1

Microbial Impurities - MDG

Pass

Sample Analysis

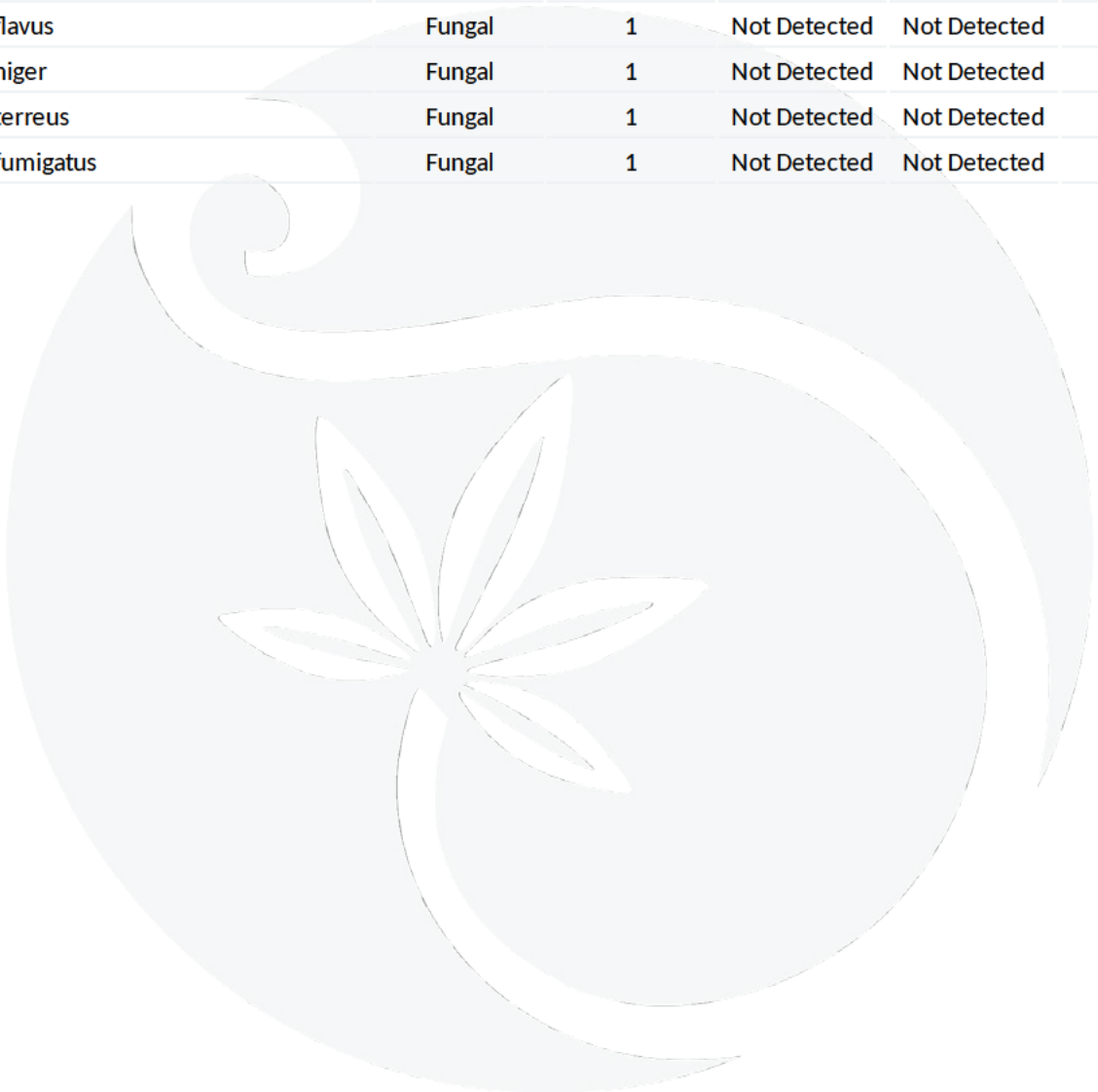
Date: 12/19/2024 05:12 PM

SOP: NYS.SOPT.40.273

Analyzed By: PCR

Analyst: Kristy Lee

| Analyte | Microbial Type | LOQ (CFU/g) | Allowable Limit | Results | Pass/Fail |
|--|----------------|-------------|-----------------|--------------|-----------|
| Shiga toxin-producing Escherichia coli | Bacterial | 1 | Not Detected | Not Detected | PASS |
| Salmonella species | Bacterial | 1 | Not Detected | Not Detected | PASS |
| Aspergillus flavus | Fungal | 1 | Not Detected | Not Detected | PASS |
| Aspergillus niger | Fungal | 1 | Not Detected | Not Detected | PASS |
| Aspergillus terreus | Fungal | 1 | Not Detected | Not Detected | PASS |
| Aspergillus fumigatus | Fungal | 1 | Not Detected | Not Detected | PASS |



Alicia Caruso-Thomas

12/19/2024

Alicia Caruso-Thomas

Laboratory Director

Phyto-Farma Labs

49 John Hicks Drive
Warwick, NY 10990
(845) 202-9737



PJLA Testing
Accreditation #: 121747

This is a Phyto-Farma certification that relates only to the material tested and shall not be reproduced, unless in its entirety, without written approval from Phyto-Farma. Test results are confidential, unless explicitly waived. All Pass/Fail results please reference state regulations released on 01FEB2024. Pass/Fail results do not use uncertainty, but is available upon request. The product represented has been tested by Phyto-Farma Labs using validated scientific methodologies. Note action levels are state determined thresholds for human safety and consumption. Acronym Definitions: ND - Not Detected, LOQ - Limit of Quantification, ULOQ - Upper Limit of Quantification; are terms used to describe the reliably measured smallest and largest concentrations. <LOQ> denotes the result is above detection limit, but below quantifiable limit. CFU - Colony Forming Units. Cannabis Product Sampling SOP# SOP.T.20.010.



California Fragrance Company, Inc.
 Address: [REDACTED]
 Contact Name:
 Contact Phone:
 License #: OCM-PROC-000009
 Sample ID: 2412SMNY0432.1870

Certificate: 7763.1

Microbial Impurities - TAPC

Pass

Sample Analysis

Date: 12/18/2024 12:16 PM SOP: NYS.SOPT.040.200
 Analyzed By: Plating
 Analyst: Kristy Lee

| Analyte | LOQ (CFU/g) | Action Limit (CFU/g) | Results (CFU/g) | Pass/Fail |
|-------------------------------|-------------|----------------------|-----------------|-----------|
| Total Aerobic Bacteria/CDP-TC | 5 | 10000 | 10 | PASS |

Microbial Impurities - TYMC

Pass

Sample Analysis

Date: 12/19/2024 05:17 PM SOP: NYS.SOPT.040.200
 Analyzed By: Plating
 Analyst: Kristy Lee

| Analyte | LOQ (CFU/g) | Action Limit (CFU/g) | Results (CFU/g) | Pass/Fail |
|----------------------|-------------|----------------------|-----------------|-----------|
| Total Yeast and Mold | 5 | 1000 | <LOQ | PASS |
| Mold Count | 5 | 1000 | <LOQ | PASS |
| Yeast Count | 5 | 1000 | <LOQ | PASS |

Water Activity

Pass

Sample Analysis

Date: 12/19/2024 05:35 PM SOP: NY.SOPT.040.210
 Analyzed By: Water Activity Meter
 Analyst: Moni Kaneti

| Analyte | LOQ (Aw) | Action Limit (Aw) | Results (Aw) | Pass/Fail |
|----------------|----------|-------------------|--------------|-----------|
| Water Activity | 0.25 | 0.85 | 0.68 | PASS |

Alicia Caruso-Thomas
 Laboratory Director

12/19/2024
Alicia Caruso-Thomas

Phyto-Farma Labs
 49 John Hicks Drive
 Warwick, NY 10990
 (845) 202-9737



This is a Phyto-Farma certification that relates only to the material tested and shall not be reproduced, unless in its entirety, without written approval from Phyto-Farma. Test results are confidential, unless explicitly waived. All Pass/Fail results please reference state regulations released on 01FEB2024. Pass/Fail results do not use uncertainty, but is available upon request. The product represented has been tested by Phyto-Farma Labs using validated scientific methodologies. Note action levels are state determined thresholds for human safety and consumption. Acronym Definitions: ND - Not Detected, LOQ - Limit of Quantification, ULOQ - Upper Limit of Quantification; are terms used to describe the reliably measured smallest and largest concentrations. <LOQ* denotes the result is above detection limit, but below quantifiable limit. CFU - Colony Forming Units. Cannabis Product Sampling SOP# SOP.T.20.010.